

WELCOME TO ROBIN CLASS



TEACHING STAFF:

Miss Newham



Mrs Woodman



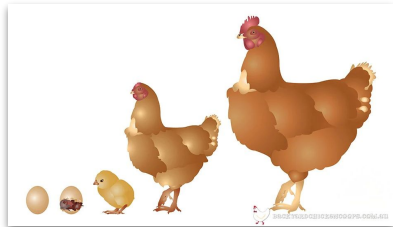
MAIN TOPICS FOR SPRING AND SUMMER TERM:

Spring TERM

Spring 1 - Near and Far



Spring 2 - Growing and Changing



Summer TERM

Summer 1 - Tell Me A Story



Summer 2 - Up Up and Away



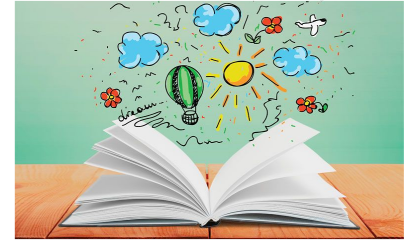
READING AT LONGPARISH:



We have a daily phonics session, we teach the Phonics scheme 'Essential Letters and Sounds' (ELS). We will hold an information meeting soon!

We will allocate specific **Phonics books** linked to their phonics learning that week.

You will have had a letter explaining that we have allocated books through an online E-book service to ensure children have a range to choose from at the right level.



Interest readers

These books will be more linked to their reading and comprehension ability. The children will have a range to choose from.

Library books

The children will have an opportunity to change their library book once a week.



HOME LEARNING EXPECTATIONS:

To best support us in teaching your child to read, we ask that you read the phonics book provided by the school **four times** across the week. Spending 10 minutes a day reading with your child will hugely support them on their journey to becoming an independent reader.

We will be changing children's books once a week before Fridays. This will allow your child to re-read each text several times, building their confidence and fluency. This is especially important as they begin to learn that the sounds within our language can be spelled in different ways.

For children, re-reading words and sentences that they can decode (sound out) until they are fluent (read with ease and precision) is a key part of learning to read. By reading texts several times, children have the greatest opportunity to achieve this fluency.

The texts sent home are carefully matched to the teaching taking place in school. Your child will be practising what they have been taught in school with you at home. We will only ask children to read books independently when they can decode these by themselves.

We do encourage you to use your local library service to familiarise children with finding books for themselves, along with other text types such as magazines, comics and non-fiction books.



HOME LEARNING EXPECTATIONS:

Practice sounds and
Harder to Read and
Spell Words daily.



15 minutes a week

Home Learning Project:

Make a poster all about your family to display in our classroom!

Due: W.C. 10th October



s sat	t tap	p pan	n nose	m mat	a ant	e egg	i ink	o otter
g goat	d dog	ck click	r run	h hat	u up	ai rain	ee knee	igh light
b bus	f farm	l lolly	j jam	v van	oa boat	oo cook	oo boot	ar star
w wish	x axe	y yell	z zap	qu quill	or fork	ur burn	ow now	oi boil
ch chin	sh ship	th think	th the	ng sing	ear near	air stair	ure sure	er writer

Termly Home
Learning project.

WHAT DOES A WEEK IN ROBIN CLASS LOOK LIKE?



Robin Class Timetable

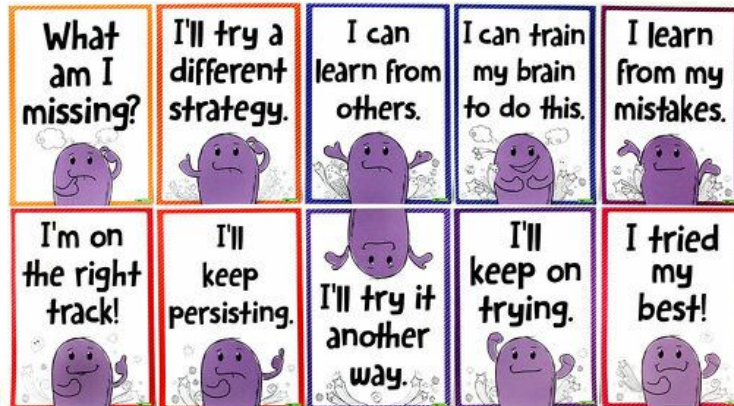
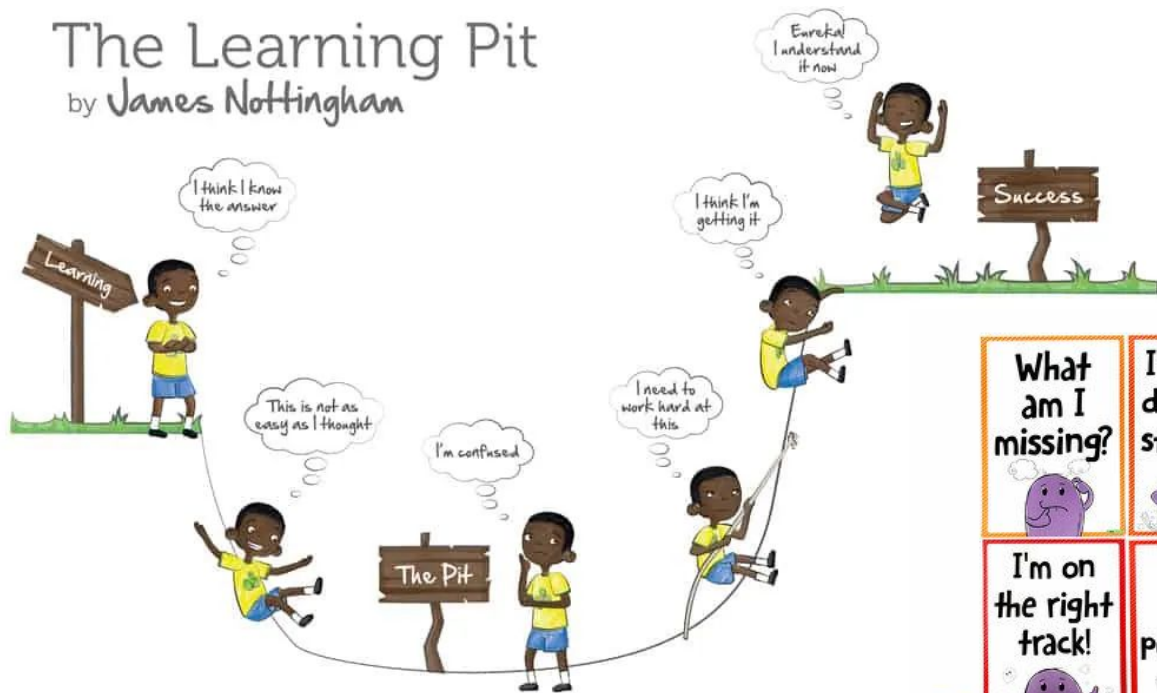
Week commencing -



	8.45-9.05am	9.05am-9.30am	9.30am-11.15am	11.15am-11.25am	11.25am-11.50am	11.50am-1pm	1pm-1.20pm	1.20pm-2pm	2pm-2.30pm	2.30pm-3.10pm
Monday KN PPA PM, SB to cover	L i n k e d p r o v i s i o n	Phonics	Discovery Time	T i d y U P T i m e	Shared Reading - DW to read	L u n c h	Maths	Discovery Time	PE - PH Sports	Story Vote
Tuesday Every other week - KN Leadership Time, SB to cover		Phonics	Discovery Time		Shared Reading - DW to read		Maths	Discovery Time	T i d y	PSHE - SCARF
Wednesday		Phonics	Discovery Time		Shared Reading - DW to read		Maths	Discovery Time	T i d y	Music
Thursday		Phonics	Discovery Time		Shared Reading - DW to read		Maths	Discovery Time	T i d y	Story Vote
Friday		Celebration Worship	Discovery Time - Phonics Book Change, KN to hear readers		Phonics		PE	Welly Walk	Flashback Friday	

DEVELOPING THE RIGHT LEARNING BEHAVIOURS

The Learning Pit by James Nottingham



COMMUNICATION

